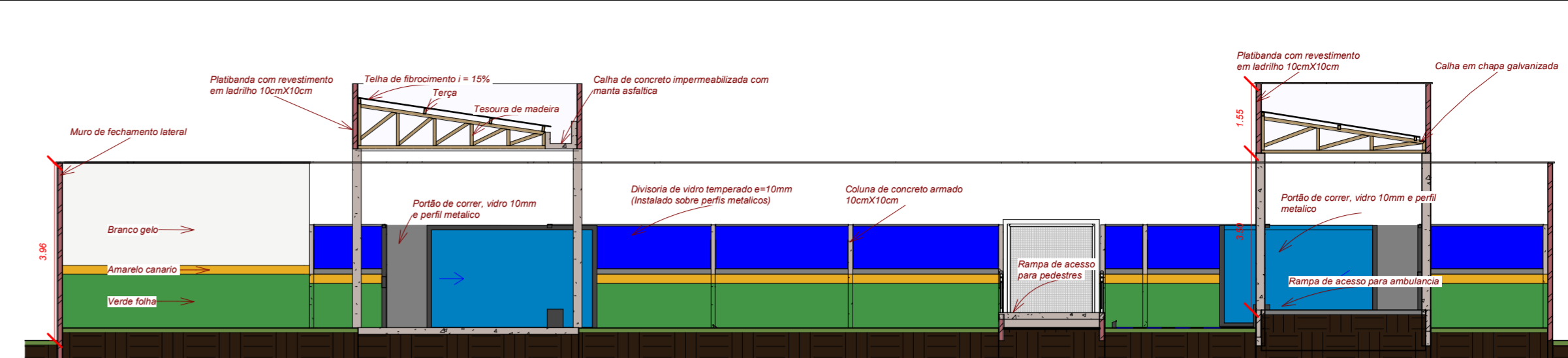
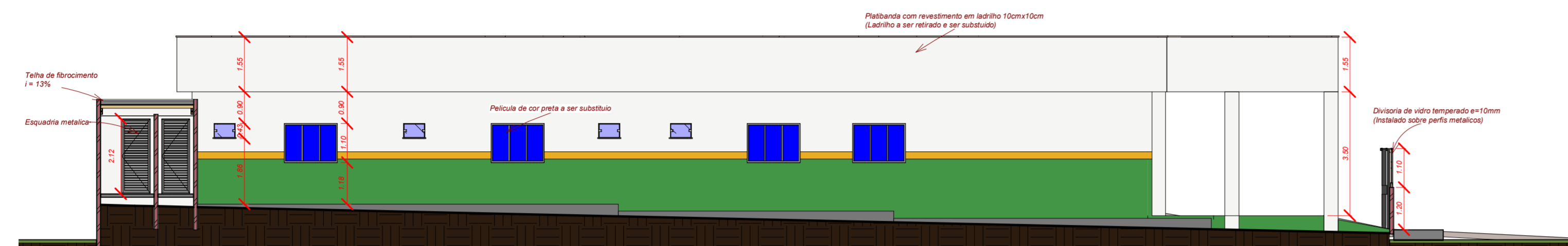


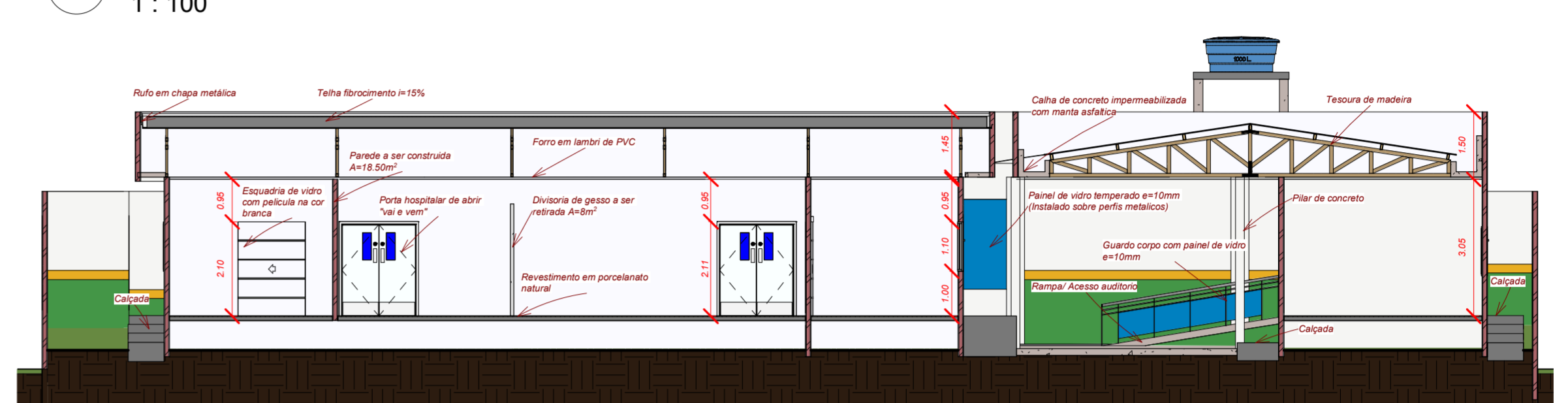
1 Corte Longitudinal 01
1 : 100



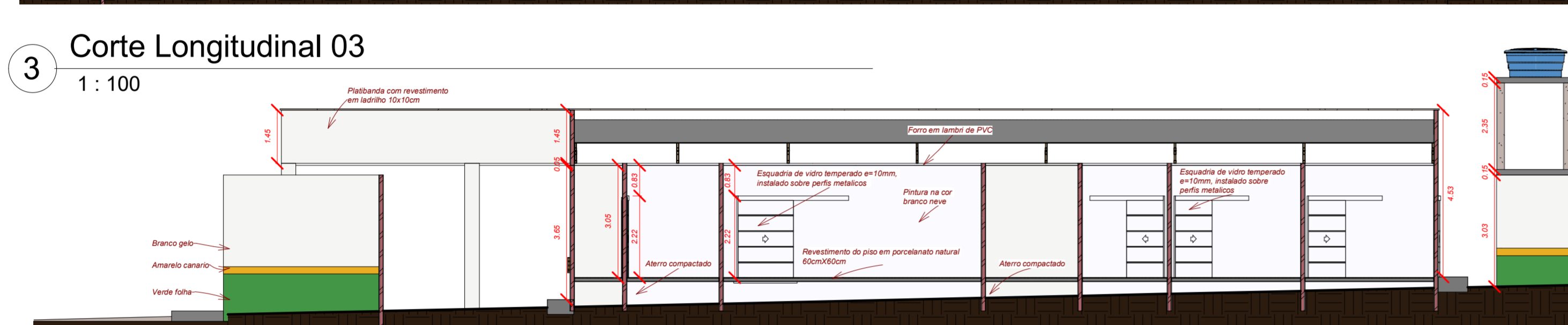
5 Corte Transversal 01
1 : 100



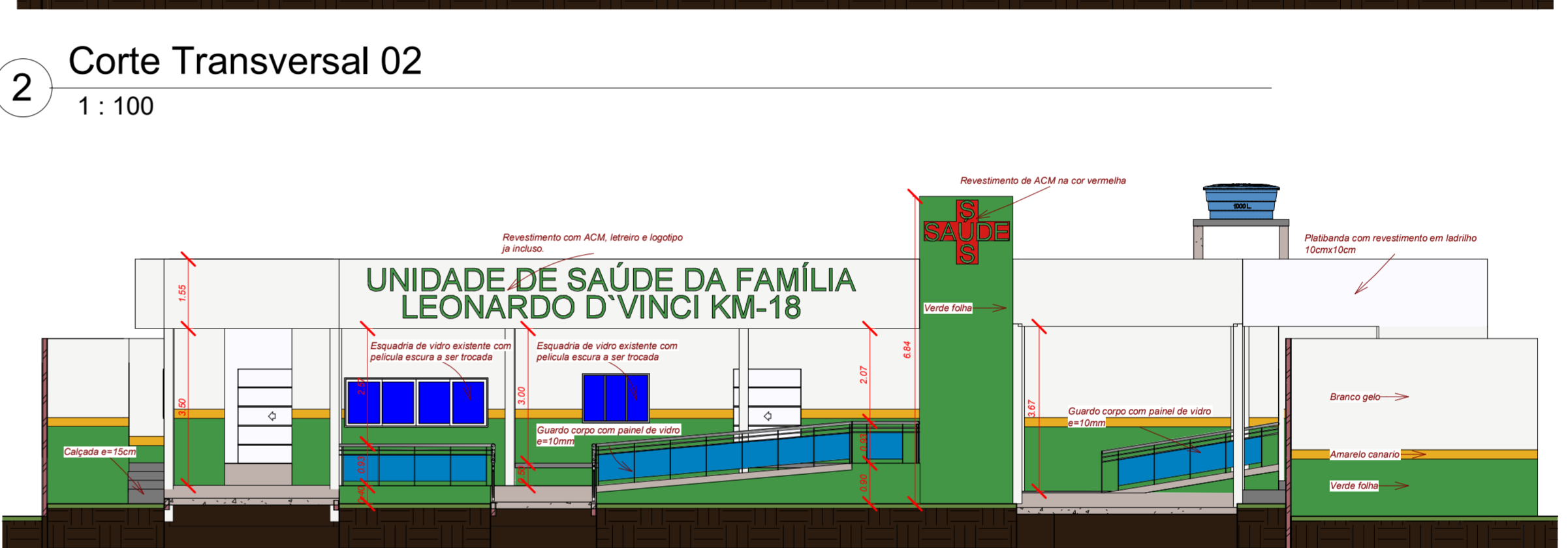
3 Corte Longitudinal 03
1 : 100



2 Corte Transversal 02
1 : 100



4 Corte Longitudinal 02
1 : 100



6 Corte Transversal 03
1 : 100




7 Vista 3D 4



8 Vista 3D 2



9 {3D} Copiar 1


PREFEITURA MUNICIPAL DE VITÓRIA DO XINGU
 SECRETARIA MUNICIPAL DE OBRAS
 DEPARTAMENTO DE ENGENHARIA E ARQUITETURA

Obra: REFORMA E AMPLIAÇÃO UNIDADE BÁSICA DE SAÚDE DA COMUNIDADE LEONARDO DA VINCI- KM18
 Endereço: VILA LEONARDO D'VINCI KM 18 - VITÓRIA DO XINGU
 Proprietário: PREFEITURA MUNICIPAL DE VITÓRIA DO XINGU
 Assunto: CORTES TRANSVERSAIS, LONGITUDINAIS E VISTAS 3D

Data: _____ Escala: INDICADA _____ Plancha nº 01 **A1**